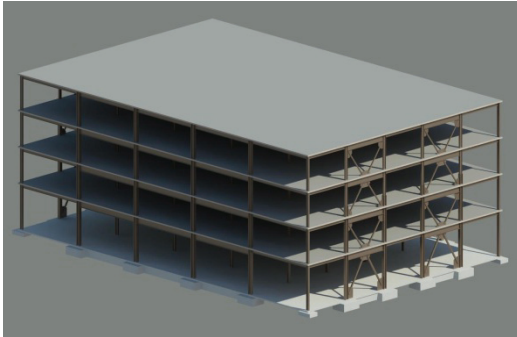


NIST GCR 10-917-8



# Evaluation of the FEMA P-695 Methodology for Quantification of Building Seismic Performance Factors

NEHRP Consultants Joint Venture  
*A partnership of the Applied Technology Council and the  
Consortium of Universities for Research in Earthquake Engineering*



**NIST**  
National Institute of  
Standards and Technology  
U.S. Department of Commerce

## Disclaimers

This report was prepared for the Engineering Laboratory of the National Institute of Standards and Technology (NIST) under the National Earthquake Hazards Reduction Program (NEHRP) Earthquake Structural and Engineering Research Contract SB134107CQ0019, Task Orders 67344 and 68002. The statements and conclusions contained herein are those of the authors and do not necessarily reflect the views and policies of NIST or the U.S. Government.

This report was produced by the NEHRP Consultants Joint Venture, a partnership of the Applied Technology Council (ATC) and the Consortium of Universities for Research in Earthquake Engineering (CUREE). While endeavoring to provide practical and accurate information, the NEHRP Consultants Joint Venture, the authors, and the reviewers assume no liability for, nor express or imply any warranty with regard to, the information contained herein. Users of information contained in this report assume all liability arising from such use.

The policy of NIST is to use the International System of Units (metric units) in all of its publications. However, in North America in the construction and building materials industry, certain non-SI units are so widely used instead of SI units that it is more practical and less confusing to include measurement values for customary units only.

Cover photo – Illustration of steel concentrically braced frame archetype for performance evaluation.

NIST GCR 10-917-8

# Evaluation of the FEMA P-695 Methodology for Quantification of Building Seismic Performance Factors

Prepared for  
*U.S. Department of Commerce  
Engineering Laboratory  
National Institute of Standards and Technology  
Gaithersburg, MD 20899-8600*

By  
NEHRP Consultants Joint Venture  
*A partnership of the Applied Technology Council and the  
Consortium of Universities for Research in Earthquake Engineering*

November 2010



U.S. Department of Commerce  
*Gary Locke, Secretary*

National Institute of Standards and Technology  
*Patrick D. Gallagher, Director*



## Participants

### National Institute of Standards and Technology

John (Jack) R. Hayes, Director, National Earthquake Hazards Reduction Program  
John (Jay) L. Harris, Project Manager

### NEHRP Consultants Joint Venture

Applied Technology Council  
201 Redwood Shores Parkway, Suite 240  
Redwood City, California 94065  
www.ATCouncil.org

Consortium of Universities for  
Research in Earthquake Engineering  
1301 S. 46th Street, Building 420  
Richmond, California 94804  
www.CUREE.org

### Joint Venture Management Committee

James R. Harris  
Robert Reitherman  
Christopher Rojahn  
Andrew Whittaker

### Joint Venture Program Committee

Jon A. Heintz (Program Manager)  
Michael Constantinou  
C.B. Crouse  
James R. Harris  
William T. Holmes  
Jack Moehle  
Andrew Whittaker

### Project Technical Committee

Charles Kircher (Project Director)  
Gregory Deierlein  
John Hooper  
Helmut Krawinkler  
Steve Mahin  
Benson Shing  
John Wallace

### Project Review Panel

Ronald O. Hamburger  
James R. Harris  
William T. Holmes  
Richard E. Klingner  
Philip Line  
Nicolas Luco  
Bonnie E. Manley  
Laurence Novak  
Rafael Sabelli  
Kurt Stochlia

### Working Group Members

Chui-Hsin Chen  
Brian Dean  
Aysegul Gogus  
Ioannis Koutromanos  
Dimitrios Lignos  
Farzin Zareian

### FEMA Representatives

Michael Mahoney  
Robert D. Hanson



---

# Preface

The NEHRP Consultants Joint Venture is a partnership between the Applied Technology Council (ATC) and the Consortium of Universities for Research in Earthquake Engineering (CUREE). In 2007, the National Institute of Standards and Technology (NIST) awarded a National Earthquake Hazards Reduction Program (NEHRP) “Earthquake Structural and Engineering Research” contract (SB1341-07-CQ-0019) to the NEHRP Consultants Joint Venture to conduct a variety of tasks, including Task Orders 67344 and 68002 entitled “Quantification of Building System Performance and Response Parameters.”

This work was an extension of work conducted under the ATC-63 Project, funded by the Federal Emergency Management Agency (FEMA), which resulted in the publication of the FEMA P-695 report, *Quantification of Building Seismic Performance Factors* (FEMA 2009). The FEMA P-695 report outlines a procedural methodology for reliably quantifying seismic performance factors, including the response modification coefficient ( $R$  factor), the system overstrength factor ( $\Omega_o$ ), and the deflection amplification factor ( $C_d$ ). While the ATC-63 Project included testing of the Methodology on selected systems (e.g., special and ordinary reinforced concrete moment frames and wood light-frame structural panel shear walls), the purpose of this NIST project was to expand the testing of the Methodology to additional seismic force-resisting systems.

Beta testing was overseen by members of the original ATC-63 Project Team, but was conducted by working groups consisting of individuals who were not directly involved in the development of the Methodology. The following systems were tested as part of this work: (1) special and ordinary reinforced masonry shear walls; (2) special and ordinary reinforced concrete shear walls; (3) special steel concentrically braced frames and buckling-restrained braced frames; and (4) special steel moment frames. With certain exceptions, results confirmed the applicability of the Methodology for quantifying seismic performance factors and verified that currently approved seismic force-resisting systems generally meet the inherent safety against collapse intended by current seismic codes and standards.

The NEHRP Consultants Joint Venture is indebted to the leadership of Charlie Kircher, Project Director, and to the members of the project team for their efforts in testing the Methodology and developing this report. The Project Technical Committee, consisting of Greg Deierlein, John Hooper, Helmut Krawinkler, Steve

Mahin, Benson Shing, and John Wallace monitored and guided the beta testing work. The Working Groups, including Chui-Hsin Chen, Brian Dean, Aysegul Gogus, Ioannis Koutromanos, Dimitrios Lignos, and Farzin Zareian prepared archetype designs and conducted nonlinear response history analyses. The Project Review Panel, consisting of Ron Hamburger, Jim Harris, Bill Holmes, Rich Klingner, Phil Line, Nico Luco, Bonnie Manley, Laurence Novak, Rafael Sabelli, and Kurt Stochlia provided technical review, advice, and consultation at key stages of the work. The names and affiliations of all who contributed to this report are provided in the list of Project Participants.

The NEHRP Consultants Joint Venture also gratefully acknowledges Jack Hayes (NEHRP Director), Jay Harris (NIST Project Manager), Michael Mahoney (FEMA Project Officer), and Robert Hanson (FEMA Technical Monitor) for their input and guidance in the preparation of this report, and Ayse Hortacsu and Peter N. Mork for ATC report production services.

Jon A. Heintz  
Program Manager



---

# Table of Contents

Preface .....	iii
List of Figures .....	xi
List of Tables.....	xvii
<b>1. Introduction .....</b>	<b>1-1</b>
1.1 Background and Purpose .....	1-1
1.2 Scope of the Beta Testing Effort.....	1-2
1.3 Report Organization and Content .....	1-7
<b>2. Overview of the FEMA P-695 Methodology .....</b>	<b>2-1</b>
2.1 Selected Terminology .....	2-1
2.2 Elements of the Methodology.....	2-2
2.3 Scope and Basis of the Methodology .....	2-3
2.4 Outline of the Process .....	2-4
2.5 Implementation of the Performance Evaluation .....	2-5
<b>3. Trial Application: Reinforced Masonry Shear Wall Structures .....</b>	<b>3-1</b>
3.1 Introduction.....	3-1
3.2 Overview and Approach .....	3-1
3.3 Structural System Information.....	3-3
3.3.1 Design Requirements.....	3-3
3.3.2 Quality Rating of Design Requirements .....	3-3
3.3.3 Test Data .....	3-3
3.3.4 Quality Rating of Test Data .....	3-4
3.4 Archetype Configurations.....	3-4
3.5 Nonlinear Model Development.....	3-12
3.5.1 Modeling Approach.....	3-12
3.5.2 Nonlinear Material Models for Reinforced Masonry .....	3-14
3.5.3 Non-Simulated Collapse Criteria.....	5-17
3.5.4 Model Calibration and Validation .....	3-18
3.5.5 Quality Rating of Analytical Models.....	3-20
3.6 Nonlinear Analyses.....	3-21
3.6.1 Static Pushover Analyses.....	3-21
3.6.2 Nonlinear Dynamic Analyses .....	3-24
3.7 Performance Evaluation.....	3-27
3.7.1 Summary of Performance Evaluation Results .....	3-27
3.8 Evaluation of System Overstrength .....	3-31
3.9 Observations and Recommendations.....	3-31
3.9.1 Observations on System Performance .....	3-31
3.9.2 Observations on the Methodology.....	3-32

3.9.3	Recommendations for Further Investigation .....	3-33
<b>4.</b>	<b>Trial Application: Reinforced Concrete Shear Wall Structures .....</b>	<b>4-1</b>
4.1	Introduction .....	4-1
4.2	Overview and Approach.....	4-1
4.3	Structural System Information .....	4-2
4.3.1	Design Requirements .....	4-2
4.3.2	Quality Rating of Design Requirements .....	4-2
4.3.3	Test Data .....	4-2
4.3.4	Quality Rating of Test Data .....	4-3
4.4	Archetype Configurations .....	4-4
4.5	Nonlinear Model Development.....	4-10
4.5.1	Modeling Approach .....	4-10
4.5.2	Nonlinear Material Model for Concrete.....	4-10
4.5.3	Nonlinear Material Model for Reinforcing Steel .....	4-11
4.5.4	Extension and Slip of Reinforcing Steel .....	4-12
4.5.5	Shear Model .....	4-13
4.5.6	Damping .....	4-14
4.5.7	Model Validation .....	4-14
4.5.8	Non-Simulated Failure Criteria.....	4-15
4.5.9	Quality Rating of Analytical Models .....	4-19
4.6	Nonlinear Analyses .....	4-19
4.7	Performance Evaluation .....	4-23
4.7.1	Summary of Performance Evaluation Results.....	4-24
4.8	Evaluation of System Overstrength.....	4-24
4.9	Observations and Recommendations .....	4-27
4.9.1	Observations on System Performance.....	4-27
4.9.2	Observations on the Methodology .....	4-28
4.9.3	Recommendations for Further Investigation.....	4-29
<b>5.</b>	<b>Trial Application: Steel Braced Frame Structures .....</b>	<b>5-1</b>
5.1	Introduction .....	5-1
5.2	Overview and Approach.....	5-1
5.3	Structural System Information .....	5-3
5.3.1	Design Requirements .....	5-3
5.3.2	Quality Rating of Design Requirements .....	5-3
5.3.3	Test Data .....	5-3
5.3.4	Quality Rating of Test Data .....	5-4
5.4	Archetype Configurations .....	5-4
5.5	Nonlinear Model Development.....	5-8
5.5.1	Modeling Approach .....	5-8
5.5.2	Nonlinear Models of Braces.....	5-9
5.5.3	Non-Simulated Failure Modes .....	5-10
5.5.4	Model Validation .....	5-11
5.5.5	Quality Rating of Analytical Models .....	5-12
5.6	Nonlinear Analyses .....	5-12
5.7	Performance Evaluation .....	5-15
5.7.1	Summary of Performance Evaluation Results.....	5-15
5.8	Evaluation of System Overstrength.....	5-18
5.9	Observations and Recommendations .....	5-19
5.9.1	Observations on System Performance.....	5-19

5.9.2	Observations on the Methodology .....	5-21
5.9.3	Recommendations for Further Investigation .....	5-21
<b>6.</b>	<b>Trial Application: Steel Moment Frame Structures .....</b>	<b>6-1</b>
6.1	Introduction.....	6-1
6.2	Overview and Approach .....	6-1
6.3	Structural System Information.....	6-2
6.3.1	Design Requirements.....	6-2
6.3.2	Quality Rating of Design Requirements .....	6-2
6.3.3	Test Data .....	6-2
6.3.4	Quality Rating of Test Data .....	6-2
6.4	Archetype Configurations.....	6-2
6.4.1	Summary of Design Observations .....	6-5
6.5	Nonlinear Model Development.....	6-7
6.5.1	Modeling Approach.....	6-7
6.5.2	Joint Panel Zone Model .....	6-8
6.5.3	Beam Plastic Hinge Model .....	6-9
6.5.4	Column Plastic Hinge Model.....	6-11
6.5.5	Quality Rating of Analytical Models.....	6-11
6.6	Nonlinear Analyses.....	6-11
6.7	Performance Evaluation.....	6-14
6.7.1	Summary of Performance Evaluation Results .....	6-14
6.8	Evaluation of System Overstrength .....	6-17
6.9	Observations and Recommendations.....	6-18
6.9.1	Observations on System Performance .....	6-18
6.9.2	Observations on the Methodology .....	6-22
6.9.3	Recommendations for Further Investigation .....	6-23
<b>7.</b>	<b>Trial Application: Full Archetype Design Space .....</b>	<b>7-1</b>
7.1	Introduction.....	7-1
7.2	Overview and Approach .....	7-1
7.3	Structural System Information.....	7-2
7.3.1	Design Requirements.....	7-2
7.3.2	Test Data .....	7-2
7.4	Archetype Configurations.....	7-3
7.4.1	Brace Configuration.....	7-3
7.4.2	Brace End Connections.....	7-4
7.4.3	Plan and Elevation Configuration.....	7-4
7.4.4	Bay Size .....	7-4
7.4.5	Brace Size .....	7-5
7.4.6	Building Height .....	7-6
7.4.7	Seismic Design Category.....	7-8
7.4.8	Gravity Design Load.....	7-8
7.5	Determination of Performance Groups.....	7-8
7.6	Identification of Controlling Performance Groups .....	7-10
7.6.1	Phase I: Sensitivity Studies.....	7-10
7.6.2	Phase I: Sensitivity Study Results .....	7-11
7.6.3	Identification of Controlling Performance Groups .....	7-13
7.6.4	Phase II: Performance Evaluation.....	7-14
7.7	Observations .....	7-15
7.7.1	Observations on the Methodology.....	7-15
7.7.2	Estimated Level of Effort .....	7-15

<b>8.</b>	<b>Summary, Conclusions, and Recommendations .....</b>	<b>8-1</b>
8.1	Summary of Beta Testing Work.....	8-1
8.2	General Findings .....	8-3
	8.2.1 Does the Methodology Meet Its Intended Purpose? .....	8-3
	8.2.2 Is the Methodology Practical to Implement? .....	8-5
8.3	Findings Related to System Performance .....	8-6
	8.3.1 Short-Period Systems .....	8-6
	8.3.2 Partially Grouted Masonry Walls.....	8-7
	8.3.3 Drift and Stability Design Requirements .....	8-7
	8.3.4 Design Assumptions.....	8-8
	8.3.5 Nonlinear Modeling Assumptions .....	8-8
8.4	Findings Related to the Methodology .....	8-9
	8.4.1 Selection of Analysis Procedure .....	8-9
	8.4.2 Quality Ratings.....	8-10
	8.4.3 Period-Based Ductility .....	8-11
	8.4.4 Acceptance Criteria for Archetypes with Low Ductility .....	8-12
8.5	Recommendations for Improving the Methodology .....	8-12
	8.5.1 Methodology Improvements .....	8-12
	8.5.2 Methodology Implementation .....	8-13

#### **Appendix A: Design Details of Reinforced Masonry Shear Wall**

<b>Archetypes .....</b>	<b>A-1</b>
A.1 Introduction .....	A-1
A.2 Material Properties and Gravity Loads .....	A-1
A.3 Structural Configurations .....	A-2
A.4 Shear Wall Designs .....	A-4
A.5 Calibration of Reinforced Masonry Shear Wall Models.....	A-16
A.6 Supplemental Model Validation Studies.....	A-17

#### **Appendix B: Design Details of Reinforced Concrete Shear Wall**

<b>Archetypes .....</b>	<b>B-1</b>
B.1 Introduction .....	B-1
B.2 Material Properties and Gravity Loads .....	B-1
B.3 Structural Configurations .....	B-2
B.4 Reinforced Concrete Shear Wall Designs .....	B-3
B.5 Model Sensitivity Studies .....	B-9
B.6 Axial Failure Model .....	B-10
B.7 Shear Model Sensitivity Studies .....	B-15

#### **Appendix C: Design Details of Steel Braced Frame Archetypes.....C-1**

C.1 Introduction .....	C-1
C.2 Material Properties and Gravity Loads .....	C-1
C.3 Seismic Design Loading.....	C-1
C.4 Story Drift and P-Delta Effects .....	C-3
C.5 Load Combinations .....	C-4
C.6 Structural Configurations .....	C-4
C.7 Member Sizes.....	C-5

#### **Appendix D: Design Details of Special Steel Moment Frame**

<b>Archetypes .....</b>	<b>D-1</b>
-------------------------	------------

D.1	Introduction.....	D-1
D.2	Structural Configuration .....	D-1
D.3	Special Steel Moment Frame Designs .....	D-1
D.4	Additional Modeling Considerations.....	D-8
D.5	P-Delta Considerations .....	D-9
D.6	Assessment of Relationship between Design and Analytical Models for Special SMFs .....	D-10

**Appendix E: Design Details of Buckling-Restrained Braced Frame**

<b>Archetypes .....</b>	<b>E-1</b>
E.1 Introduction.....	E-1
E.2 Material Properties and Design Loading .....	E-2
E.3 Buckling-Restrained Braced Frame Designs .....	E-2
E.3.1 Buckling-Restrained Frame Designs for Phase I Sensitivity Studies .....	E-2
E.3.2 Buckling-Restrained Braced Frame Designs for Phase II Performance Evaluation.....	E-8

<b>References .....</b>	<b>F-1</b>
-------------------------	------------

<b>Project Participants .....</b>	<b>G-1</b>
-----------------------------------	------------



---

# List of Figures

Figure 2-1	Key elements of the FEMA P-695 Methodology .....	2-3
Figure 2-2	Outline of process for quantitatively establishing and documenting seismic performance factors.....	2-5
Figure 3-1	Plan view of typical single-story reinforced masonry shear wall building configuration.....	3-5
Figure 3-2	Plan view of typical multistory reinforced masonry shear wall building configuration.....	3-6
Figure 3-3	Dimensions of multistory reinforced masonry shear walls.....	3-7
Figure 3-4	Representative element assembly in a typical archetype model .....	3-13
Figure 3-5	Normalized reference stress-strain curves used for compressive behavior of masonry: backbone curve (top) and cyclic loading and unloading curves (bottom). .....	3-15
Figure 3-6	Reference stress-strain relations used for reinforcing steel: backbone curve (top) and cyclic loading and unloading curves (bottom) .....	3-16
Figure 3-7	Single-story walls tested by Shing et al. (1991) .....	3-19
Figure 3-8	Lateral load versus displacement curves for Specimen 1 tested by Shing et al. (1991): (a) experimental results; (b) analytical model. ....	3-20
Figure 3-9	Lateral load versus displacement curves for Specimen 12 tested by Shing et al. (1991): (a) experimental results; (b) analytical model .....	3-20
Figure 3-10	Pushover curve for the 2-story, high axial load, SDC $D_{max}$ archetype.....	3-21
Figure 3-11	Pushover curve for the 12-story, high axial load, SDC $D_{max}$ archetype.....	3-22
Figure 3-12	Pushover curve for the 12-story, low axial load, SDC $D_{max}$ archetype.....	3-22
Figure 3-13	Pushover curve for the 12-story, high axial load, SDC $C_{max}$ archetype. ....	3-23
Figure 3-14	Pushover curve for the 4-story, high axial load, SDC $D_{max}$ archetype.....	3-23

Figure 4-1	Plan configuration for reinforced concrete shear wall archetypes.....	4-5
Figure 4-2	Concrete stress-strain behavior model (C02) contained in OpenSees.....	4-11
Figure 4-3	Hysteretic material model for reinforcing steel.....	4-11
Figure 4-4	Rotational spring model for reinforcing steel extension and slip.....	4-12
Figure 4-5	Generalized shear model adapted from ASCE/SEI 41-06.....	4-13
Figure 4-6	Plot of Rayleigh damping model, $\zeta = 2.5\%$ , at $T_1$ and $0.2T_1$ , for archetype ID 8.....	4-14
Figure 4-7	Non-simulated criteria for buckling and fracture of reinforcing steel.....	4-15
Figure 4-8	Pushover analysis results for the 4-story, low axial load, SDC $C_{max}$ archetype (ID 33).....	4-16
Figure 4-9	Pushover analysis results for the 4-story, high axial load, SDC $C_{max}$ archetype (ID 23).....	4-16
Figure 4-10	Non-simulated criteria for crushing and spalling of concrete in: (a) special RCSW archetypes; and (b) ordinary RCSW archetypes.....	4-17
Figure 4-11	Approximate shear failure criterion used to account for the effects of flexural demand on shear behavior.....	4-18
Figure 4-12	Pushover results for the 1-story, low axial load, SDC $D_{max}$ archetype (ID 11).....	4-19
Figure 4-13	Pushover results for the 2-story, low axial load, SDC $D_{max}$ archetype (ID 12).....	4-20
Figure 4-14	Pushover results for the 4-story, low axial load, SDC $D_{max}$ archetype (ID 13).....	4-20
Figure 4-15	Pushover results for the 8-story, low axial load, SDC $D_{max}$ archetype (ID 14).....	4-20
Figure 4-16	Pushover results for the 12-story, high axial load, SDC $D_{max}$ archetype (ID 5).....	4-21
Figure 5-1	Typical plan configuration of special SCBF and BRBF archetypes.....	5-5
Figure 5-2	Elevation of 2-, 3-, 6-, 12-, and 16-story braced frame archetypes.....	5-5
Figure 5-3	Two-dimensional plane frame model with a leaning column.....	5-8
Figure 5-4	Initial camber used to model buckling behavior of brace elements.....	5-10



Figure 5-5	Comparison of experimental data and nonlinear simulation for the 2-story special SCBF archetype .....	5-12
Figure 5-6	Pushover curves for the set of 3-story special SCBF and BRBF archetypes .....	5-13
Figure 5-7	IDA results for 3-story special SCBF $D_{max}$ archetypes.....	5-13
Figure 5-8	Demand profile of pushover analysis and approximate capacity of archetype 16BRBFD <sub>max</sub> (RSA).....	5-20
Figure 6-1	Typical plan configuration of special SMF archetypes .....	6-3
Figure 6-2	Typical floor model used for special SMF archetypes .....	6-7
Figure 6-3	Joint panel zone model .....	6-8
Figure 6-4	Parameters of the initial (monotonic) backbone curve of the Ibarra-Krawinkler model .....	6-9
Figure 6-5	Basic and post-capping strength deterioration.....	6-10
Figure 6-6	Calibration between deterioration model and experimental results.....	6-10
Figure 6-7	Example moment-rotation backbone curves.....	6-10
Figure 6-8	Example pushover curve and illustration of overstrength, $\Omega$ , and ultimate displacement, $\delta_u$ .....	6-12
Figure 6-9	Graphical representation of ACMRs for all archetypes.....	6-17
Figure 6-10	Graphical representation of overstrength factor for all archetypes .....	6-18
Figure 6-11	Global pushover curves for 1-, 2-, 4-, and 20-story special SMFs.....	6-19
Figure 6-12	Deformation profile of the 20-story, RSA, SDC $D_{max}$ archetype showing the change in deflected shape with increasing roof displacement .....	6-20
Figure 6-13	Response characteristics of the 20-story, RSA, SDC $D_{max}$ archetype at a scale factor of 4.1.....	6-21
Figure 6-14	Response characteristics of the 20-story, RSA, SDC $D_{max}$ archetype at a scale factor of 4.4 (structure collapses) .....	6-22
Figure 7-1	Brace configurations considered in the BRBF archetype design space.....	7-3
Figure 7-2	Plan configurations for ZZ- and LB-diagonal brace configurations illustrated for 2-story archetypes with bay widths of 15 feet and 25 feet.....	7-5
Figure 7-3	Plan configurations for chevron and X-brace configurations illustrated for 2-story archetypes with bay widths of 20 feet and 30 feet.....	7-6

Figure 7-4	Building heights considered for single-bay, chevron archetype configurations designed for SDC $D_{max}$ seismic loading .....	7-7
Figure A-1	Single-story reinforced masonry shear wall building configuration .....	A-2
Figure A-2	Multistory reinforced masonry shear wall building configurations.....	A-3
Figure A-3	Plan sections of fully grouted special reinforced masonry shear walls, SDC $D_{max}$ .....	A-7
Figure A-4	Plan sections of fully grouted special reinforced masonry shear walls, SDC $D_{min}$ .....	A-10
Figure A-5	Plan sections of partially grouted ordinary reinforced masonry shear walls, SDC $C_{max}$ .....	A-13
Figure A-6	Plan sections of partially grouted ordinary reinforced masonry shear walls, SDC $C_{min}$ .....	A-16
Figure A-7	Lateral load versus displacement curves for Specimen 2a tested by Merryman et al. (1990): (a) experimental results; (b) analytical model.....	A-18
Figure A-8	Lateral load versus displacement curves for Specimen 6 tested by Shedid et al. (2008): (a) experimental results; (b) analytical model.....	A-18
Figure A-9	Lateral load versus lateral displacement for a wall tested by Ghanem et al. (1992).....	A-19
Figure B-1	Axial load-moment ( $P$ - $M$ ) interaction diagram for Archetype 12 .....	B-4
Figure B-2	Example shear wall section with boundary element reinforcing .....	B-4
Figure B-3	Cracked pier free-body diagram.....	B-11
Figure B-4	Wall pier geometry and critical crack angles .....	B-11
Figure B-5	Drift ratio at axial failure for different critical crack angles and axial load levels .....	B-13
Figure B-6	Model results with an effective shear modulus of 0.1E .....	B-16
Figure B-7	Model results with an effective shear modulus of 0.05E .....	B-16
Figure B-8	Model results with an effective shear modulus of 0.01E .....	B-17
Figure B-9	Shear model with reduced shear modulus for calibration with specimen RW2 .....	B-17
Figure C-1	Plan configuration of 2-story braced frame archetypes.....	C-4
Figure C-2	Plan configuration of 3-story and 6-story braced frame archetypes.....	C-5

Figure C-3	Plan configuration of 12-story and 16-story braced frame archetypes .....	C-5
Figure D-1	Typical plan view of buildings used for archetype selection.....	D-2
Figure D-2	Definition of terms for reduced beam section design .....	D-2
Figure D-3	Estimated story shear capacity, 4-story, SDC $D_{max}$ RSA archetype.....	D-10



---

# List of Tables

Table 1-1	Summary of Design Coefficients and Factors from Table 12.2-1 of ASCE/SEI 7-05 for Each System.....	1-3
Table 1-2	Summary of Design Criteria Used to Prepare Index Archetype Configurations for Each System .....	1-4
Table 1-3	Summary of Index Archetype Heights (Number of Stories) for Each System .....	1-5
Table 1-4	Summary of Performance Groups and Total Number of Archetypes Used to Evaluate Each System .....	1-6
Table 3-1	Summary of Performance Groups and Total Number of Archetypes Used to Evaluate Each System .....	3-8
Table 3-2	Performance Groups for Evaluation of Ordinary Reinforced Masonry Shear Wall Archetypes .....	3-8
Table 3-3	Special Reinforced Masonry Shear Wall Archetype Design Variables.....	3-9
Table 3-4	Ordinary Reinforced Masonry Shear Wall Archetype Design Variables.....	3-9
Table 3-5	Special Reinforced Masonry Shear Wall Archetype Design Properties.....	3-10
Table 3-6	Ordinary Reinforced Masonry Shear Wall Archetype Design Properties.....	3-11
Table 3-7	Summary of Collapse Results for Special Reinforced Masonry Shear Wall Archetype Designs.....	3-25
Table 3-8	Summary of Collapse Results for Ordinary Reinforced Masonry Shear Wall Archetype Designs.....	3-26
Table 3-9	Summary of Quality Ratings for Reinforced Masonry Shear Wall Systems .....	3-27
Table 3-10	Summary of Collapse Performance Evaluations of Special Reinforced Masonry Shear Wall Archetypes.....	3-28
Table 3-11	Summary of Collapse Performance Evaluations of Ordinary Reinforced Masonry Shear Wall Archetypes.....	3-29
Table 3-12	Summary of Results by Performance Group for Special Reinforced Masonry Shear Walls .....	3-30

Table 3-13	Summary of Results by Performance Group for Ordinary Reinforced Masonry Shear Walls .....	3-30
Table 4-1	Performance Groups for Evaluation of Special Reinforced Concrete Shear Wall Archetypes .....	4-6
Table 4-2	Performance Groups for Evaluation of Ordinary Reinforced Concrete Shear Wall Archetypes .....	4-6
Table 4-3	Special Reinforced Concrete Shear Wall Archetype Design Properties.....	4-7
Table 4-4	Ordinary Reinforced Concrete Shear Wall Archetype Design Properties.....	4-8
Table 4-5	Summary of Collapse Results for Special Reinforced Concrete Shear Wall Archetype Designs .....	4-22
Table 4-6	Summary of Collapse Results for Ordinary Reinforced Concrete Shear Wall Archetype Designs .....	4-23
Table 4-7	Summary of Quality Ratings for Reinforced Concrete Shear Wall Systems.....	4-24
Table 4-8	Summary of Collapse Performance Evaluations of Special Reinforced Concrete Shear Wall Archetypes.....	4-25
Table 4-9	Summary of Collapse Performance Evaluations of Ordinary Reinforced Concrete Shear Wall Archetypes.....	4-26
Table 4-10	Summary of Results by Performance Group for Special Reinforced Concrete Shear Walls .....	4-27
Table 4-11	Summary of Results by Performance Group for Ordinary Reinforced Concrete Shear Walls .....	4-27
Table 5-1	Performance Groups for Evaluation of Special Steel Concentrically Braced Frame Archetypes.....	5-6
Table 5-2	Performance Groups for Evaluation of Buckling-Restrained Brace Frame Archetypes .....	5-6
Table 5-3	Special Steel Concentrically Braced Frame Archetype Design Properties .....	5-7
Table 5-4	Buckling-Restrained Brace Frame Archetype Design Properties.....	5-7
Table 5-5	Modeling Status of Critical Deterioration Modes in Steel Braced Frame Structures .....	5-11
Table 5-6	Summary of Collapse Results for Special Steel Concentrically Braced Frame Archetype Designs .....	5-14
Table 5-7	Summary of Collapse Results for Buckling-Restrained Braced Frame Archetype Designs.....	5-14

Table 5-8	Summary of Quality Ratings for Steel Braced Frame Systems ....	5-15
Table 5-9	Summary of Collapse Performance Evaluations of Special Steel Concentrically Braced Frame Archetypes .....	5-16
Table 5-10	Summary of Collapse Performance Evaluations of Buckling-Restrained Braced Frame Archetypes .....	5-17
Table 5-11	Summary of Results by Performance Group for Special Steel Concentrically Braced Frames .....	5-18
Table 5-12	Summary of Results by Performance Group for Buckling-Restrained Brace Frames .....	5-18
Table 6-1	Performance Groups for Evaluation of Special Steel Moment Frame Archetypes (ELF Design Basis) .....	6-4
Table 6-2	Performance Groups for Evaluation of Special Steel Moment Frame Archetypes (RSA Design Basis).....	6-4
Table 6-3	Special Steel Moment Frame Archetype Design Properties (ELF Design Basis).....	6-5
Table 6-4	Special Steel Moment Frame Archetype Design Properties (RSA Design Basis).....	6-5
Table 6-5	Summary of Collapse Results for Special Steel Moment Frame Archetypes (ELF Design Basis) .....	6-13
Table 6-6	Summary of Collapse Results for Special Steel Moment Frame Archetypes (RSA Design Basis).....	6-13
Table 6-7	Summary of Quality Ratings for Special Steel Moment Frame Systems .....	6-14
Table 6-8	Summary of Collapse Performance Evaluations of Special Steel Moment Frame Archetypes (ELF Design Basis).....	6-14
Table 6-9	Summary of Collapse Performance Evaluations of Special Steel Moment Frame Archetypes (RSA Design Basis) .....	6-15
Table 6-10	Summary of Results by Performance Group for Special Steel Moment Frames (ELF Design Basis).....	6-16
Table 6-11	Summary of Results by Performance Group for Special Steel Moment Frames (RSA Design Basis).....	6-16
Table 7-1	Building Height and Period for Buckling-Restrained Brace Frame Archetypes .....	7-8
Table 7-2	Performance Groups for Evaluation of Buckling-Restrained Braced Frame Archetypes.....	7-9
Table 7-3	Buckling-Restrained Braced Frame Archetype Design Properties for Phase I Sensitivity Studies .....	7-11
Table 7-4	Summary of Phase I Sensitivity Study Results.....	7-12

Table 7-5	Summary of Controlling Performance Groups for the Buckling-Restrained Braced Frame System.....	7-13
Table 7-6	Buckling-Restrained Braced Frame Archetype Design Properties for Phase II Performance Evaluation .....	7-14
Table 8-1	Number of Archetypes Passing the Acceptance Criterion for Evaluation of Individual Archetypes.....	8-4
Table 8-2	Number of Performance Groups Passing the Average Acceptance Criterion for Evaluation of Performance Groups .....	8-5
Table 8-3	Comparison of Fundamental Period, $T_1$ , of Special SMF Archetypes Designed Using ELF and RSA Procedures.....	8-10
Table 8-4	Comparison of Normalized Strength, $V_{max}/W$ , of Special SMF Archetypes Designed Using ELF and RSA Procedures.....	8-10
Table 8-5	Summary of Quality Ratings for All Systems Evaluated.....	8-11
Table A-1	Material Properties for Special RMSW and Ordinary RMSW Archetypes.....	A-1
Table A-2	Gravity Load Assumptions for Special RMSW and Ordinary RMSW Archetypes .....	A-2
Table A-3	Reinforced Masonry Shear Wall Building Archetype Configurations.....	A-4
Table A-4	1-Story Special Reinforced Masonry Shear Wall Designs, SDC $D_{max}$ .....	A-5
Table A-5	2-Story Special Reinforced Masonry Shear Wall Designs, SDC $D_{max}$ .....	A-5
Table A-6	4-Story Special Reinforced Masonry Shear Wall Designs, SDC $D_{max}$ .....	A-5
Table A-7	8-Story Special Reinforced Masonry Shear Wall Designs, SDC $D_{max}$ .....	A-6
Table A-8	12-Story Special Reinforced Masonry Shear Wall Designs, SDC $D_{max}$ .....	A-6
Table A-9	1-Story Special Reinforced Masonry Shear Wall Designs, SDC $D_{min}$ .....	A-8
Table A-10	2-Story Special Reinforced Masonry Shear Wall Designs, SDC $D_{min}$ .....	A-8
Table A-11	4-Story Special Reinforced Masonry Shear Wall Designs, SDC $D_{min}$ .....	A-8
Table A-12	8-Story Special Reinforced Masonry Shear Wall Designs, SDC $D_{min}$ .....	A-8



Table A-13	12-Story Special Reinforced Masonry Shear Wall Designs, SDC $D_{min}$ .....	A-9
Table A-14	1-Story Ordinary Reinforced Masonry Shear Wall Designs, SDC $C_{max}$ .....	A-11
Table A-15	2-Story Ordinary Reinforced Masonry Shear Wall Designs, SDC $C_{max}$ .....	A-11
Table A-16	4-Story Ordinary Reinforced Masonry Shear Wall Designs, SDC $C_{max}$ .....	A-11
Table A-17	8-Story Ordinary Reinforced Masonry Shear Wall Designs, SDC $C_{max}$ .....	A-11
Table A-18	12-Story Ordinary Reinforced Masonry Shear Wall Designs, SDC $C_{max}$ .....	A-12
Table A-19	1-Story Ordinary Reinforced Masonry Shear Wall Designs, SDC $C_{min}$ .....	A-14
Table A-20	2-Story Ordinary Reinforced Masonry Shear Wall Designs, SDC $C_{min}$ .....	A-14
Table A-21	4-Story Ordinary Reinforced Masonry Shear Wall Designs, SDC $C_{min}$ .....	A-14
Table A-22	8-Story Ordinary Reinforced Masonry Shear Wall Designs, SDC $C_{min}$ .....	A-14
Table A-23	12-Story Ordinary Reinforced Masonry Shear Wall Designs, SDC $C_{min}$ .....	A-15
Table B-1	Material Properties for Special RCSW and Ordinary RCSW Archetypes .....	B-1
Table B-2	Gravity Load Assumptions for Special RCSW and Ordinary RCSW Archetypes .....	B-1
Table B-3	Special Reinforced Concrete Shear Wall Archetype Configurations .....	B-2
Table B-4	Ordinary Reinforced Concrete Shear Wall Archetype Configurations .....	B-3
Table B-5	1-Story Special Reinforced Concrete Shear Wall Designs .....	B-5
Table B-6	2-Story Special Reinforced Concrete Shear Wall Designs .....	B-5
Table B-7	4-Story Special Reinforced Concrete Shear Wall Designs .....	B-5
Table B-8	8-Story Special Reinforced Concrete Shear Wall Designs .....	B-6
Table B-9	12-Story Special Reinforced Concrete Shear Wall Designs .....	B-6
Table B-10	1-Story Ordinary Reinforced Concrete Shear Wall Designs .....	B-7
Table B-11	2-Story Ordinary Reinforced Concrete Shear Wall Designs .....	B-7

Table B-12	4-Story Ordinary Reinforced Concrete Shear Wall Designs.....	B-7
Table B-13	8-Story Ordinary Reinforced Concrete Shear Wall Designs.....	B-8
Table B-14	12-Story Ordinary Reinforced Concrete Shear Wall Designs.....	B-8
Table B-15	Estimated Plastic Hinge Lengths and Number of Elements Per Story.....	B-9
Table B-16	Results of Sensitivity Studies for 1-story Archetype .....	B-10
Table B-17	Modeled and Assumed Drift at Axial Failure for Special Reinforced Concrete Shear Wall Archetypes.....	B-13
Table B-18	Modeled and Assumed Drift at Axial Failure for Ordinary Reinforced Concrete Shear Wall Archetypes.....	B-14
Table B-19	Comparison of <i>ACMR</i> Values Considering All Failure Modes and Axial Failure Modes .....	B-15
Table C-1	Structural Materials for Special SCBF and BRBF Archetypes.....	C-2
Table C-2	Gravity Loads for Special SCBF and BRBF Archetypes.....	C-2
Table C-3	Seismic Design Parameters for Special SCBF and BRBF Archetypes.....	C-3
Table C-4	Member Sizes for 2-Story Braced Frame Archetypes .....	C-6
Table C-5	Member Sizes for 3-Story Braced Frame Archetypes.....	C-6
Table C-6	Member Sizes for 6-Story Braced Frame Archetypes.....	C-7
Table C-7	Member Sizes for 12-Story Braced Frame Archetypes.....	C-8
Table C-8	Member Sizes for 16-Story Braced Frame Archetypes.....	C-9
Table D-1	Member Sizes for Special SMF Performance Group PG-1ELF, SDC $D_{max}$ .....	D-3
Table D-2	Member Sizes for Special SMF Performance Group PG-2ELF, SDC $D_{max}$ .....	D-3
Table D-3	Member Sizes for Special SMF Performance Group PG-3ELF, SDC $D_{min}$ .....	D-4
Table D-4	Member Sizes for Special SMF Performance Group PG-4ELF, SDC $D_{min}$ .....	D-4
Table D-5	Member Sizes for Special SMF Performance Group PG-1RSA, SDC $D_{max}$ .....	D-5
Table D-6	Member Sizes for Special SMF Performance Group PG-2RSA, SDC $D_{max}$ .....	D-5
Table D-7	Member Sizes for Special SMF Performance Group PG-3RSA, SDC $D_{min}$ .....	D-6

Table D-8	Member Sizes for Special SMF Performance Group PG-4RSA, SDC D <sub>min</sub> .....	D-7
Table E-1	Structural Materials for BRBF Archetypes.....	E-2
Table E-2	Member Sizes for Buckling-Restrained Braced Frame Archetypes for Sensitivity Study 1 .....	E-3
Table E-3	Member Sizes for Buckling-Restrained Braced Frame Archetypes for Sensitivity Study 2 .....	E-5
Table E-4	Member Sizes for Buckling-Restrained Braced Frame Archetypes for Sensitivity Study 3 .....	E-6
Table E-5	Member Sizes for Buckling-Restrained Braced Frame Performance Group PG-10 .....	E-8
Table E-6	Member Sizes for Buckling-Restrained Braced Frame Performance Group PG-12 .....	E-11
Table E-7	Member Sizes for Buckling-Restrained Braced Frame Performance Group PG-13 .....	E-13
Table E-8	Member Sizes for Buckling-Restrained Braced Frame Performance Groups PG-15, PG-11, and PG-20 .....	E-13